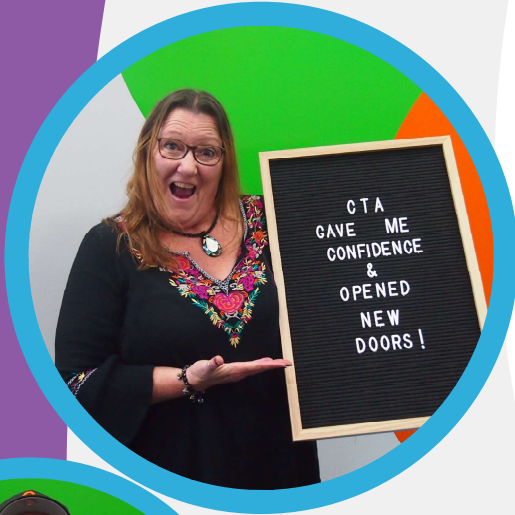


# CAREER TRANSITION ASSISTANCE



## PURPOSE

Designer Life Career Transition Assistance (CTA) will help you to discover the right pathway into work whether you are returning to work, looking for a new opportunity or wanting to change your career path.

## IS THIS FOR ME?

Have you recently lost your job and don't know where to start your job search? Are you frustrated by job application rejection letters? Are you feeling ineffective with your job search and that you're being overlooked by employers?



**Designer Life**

CTA is facilitated from Designer Life Training Hubs in your local region.  
Speak to your jobactive or contact us on 07 3333 2055 to find a location near you.

If you are 45 years of age and over then you may be eligible for our Career Transition Assistance program.



"I enjoy hearing about computer and tablet skills. Also listening to other people about their endeavors to gaining a job and listening to other people in the group" **Trevor Sellwood**

"After one full week, I can say that I am enjoying the course content and the interaction with the other attendees. I am finding the focusing on goals, values, resume, etc to be of real use in defining my thoughts and job finding process"  
- **Cheryl Otter**

---

**FOR MORE INFORMATION OR ENQUIRIES PLEASE  
SEE YOUR JOACTIVE ADVISER OR CONTACT US ON**

**(07) 3333 2055  
CTA@DESIGNERLIFE.COM.AU**